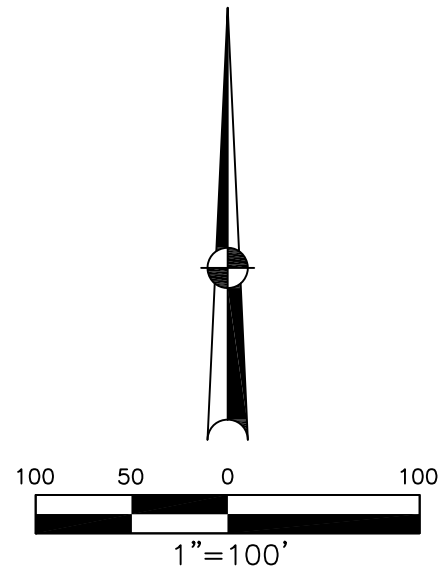


SECTION 25  
TOWN 7  
RANGE 5

CITY OF TROY  
MIAMI COUNTY, OHIO

PARCEL ID NUMBER  
D08-\_\_\_\_\_

PLAT SW 212



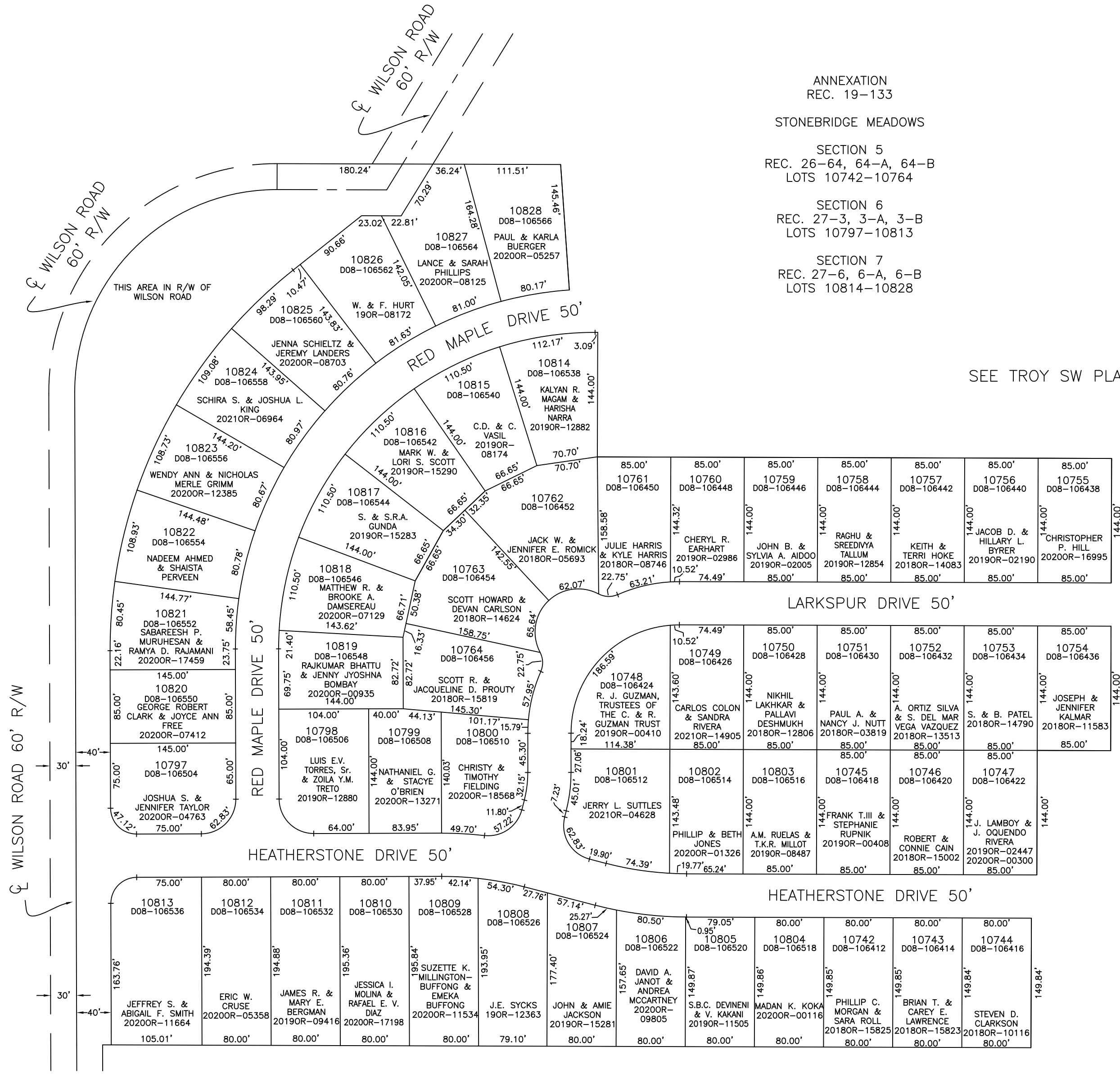
ABBREVIATION LEGEND	
20140R-07759	= RECORDER'S DOCUMENT NUMBER
OR 406-509	= OFFICIAL RECORD 406 PAGE 509
D.B. 677-326	= DEED BOOK 677, PAGE 326
REC. 18-87	= RECORDER'S PLAT BOOK 18, PAGE 87
LND. 56-145	= LAND SURVEY VOLUME 56, PAGE 145
LOT 24-200	= LOT SURVEY VOLUME 24, PAGE 200
R.R. 8-18	= ROAD RECORD VOLUME 8, PAGE 18
R/W	= RIGHT OF WAY
CL	= CENTERLINE
AC.	= ACRES
TWP.	= TOWNSHIP
TR.	= TRACT
IL	= INLOT

LINE LEGEND	
	Blow-up Boundary
	Property Line
	Lot Split Line
	Section Line
	Centerline
	Right-of-Way Line
	Corporation Line

SURVEY INDEX		
LND. 22-56	REC. 19-133	
LND. 28-185	REC. 26-64	
LND. 56-139	REC. 27-3	
	REC. 27-6	



ANNEXATION  
REC. 19-133  
STONEBRIDGE MEADOWS  
SECTION 5  
REC. 26-64, 64-A, 64-B  
LOTS 10742-10764  
SECTION 6  
REC. 27-3, 3-A, 3-B  
LOTS 10797-10813  
SECTION 7  
REC. 27-6, 6-A, 6-B  
LOTS 10814-10828

SEE TROY SW PLAT 210

PREPARED BY: MIAMI COUNTY ENGINEER'S MAP DEPARTMENT  
PAUL P. HUELSKAMP, P.E., P.S., COUNTY ENGINEER  
DATE: JULY 17, 2018 DS  
REVISED: August 26, 2021 CSHOUP