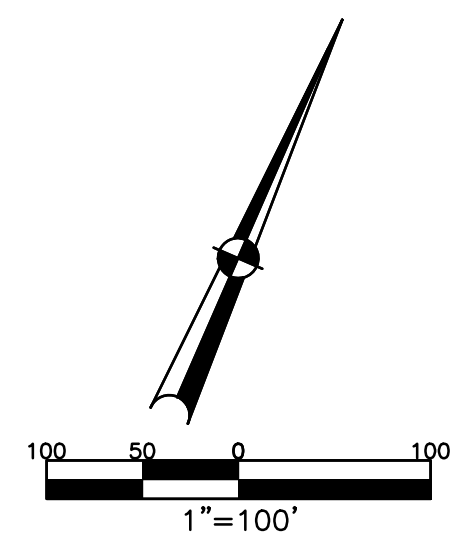


SECTION 12, TOWN 1, RANGE 10
 SECTION 18, TOWN 1, RANGE 10
 SECTION 7, TOWN 1, RANGE 11
 SECTION 13, TOWN 1, RANGE 11

CITY OF TROY MIAMI COUNTY, OHIO

PARCEL ID NUMBER
 R50-_____

PLAT NE 110

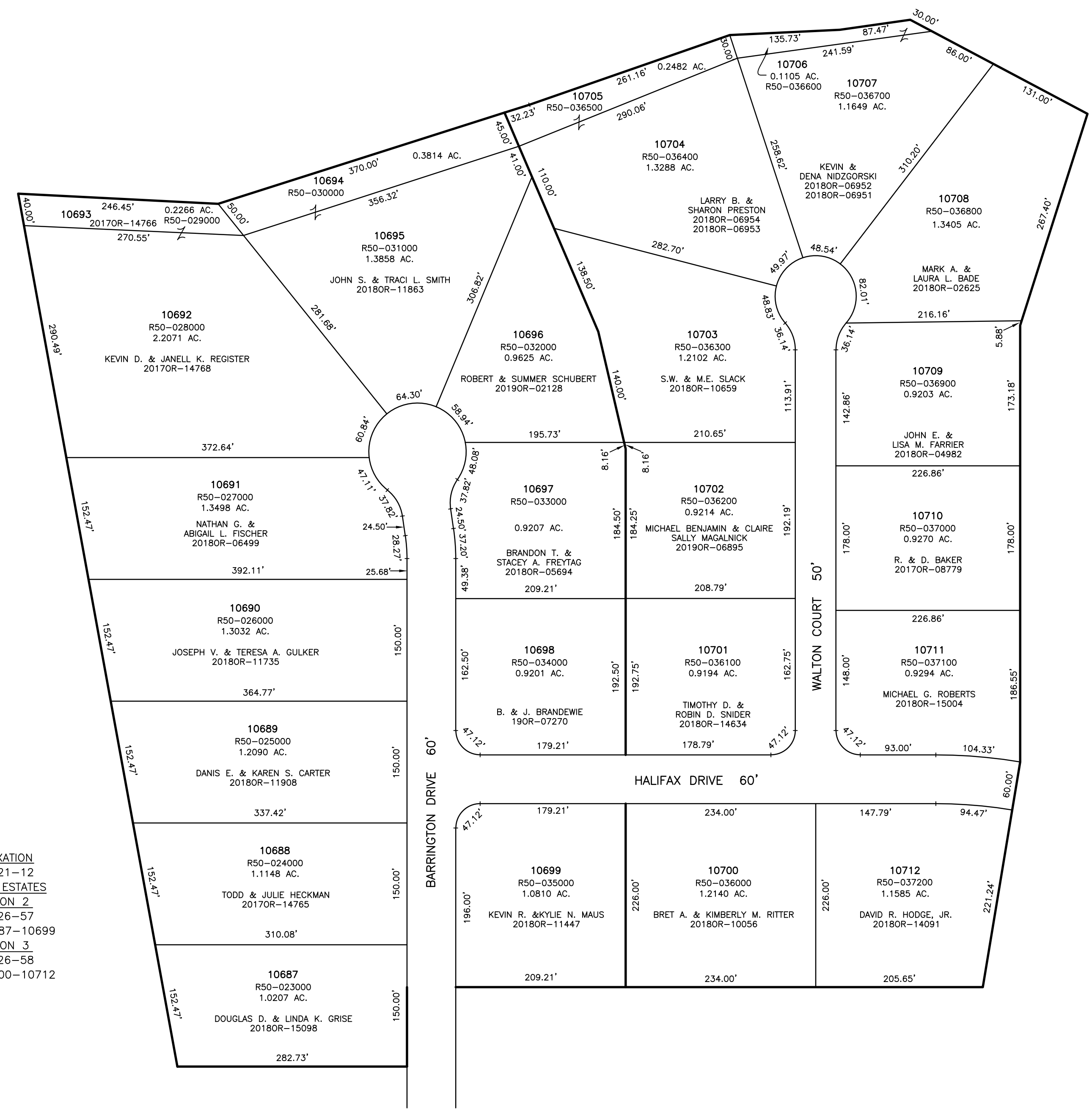


ABBREVIATION LEGEND	
20140R-07759	= RECORDER'S DOCUMENT NUMBER
OR 406-509	= OFFICIAL RECORD 406 PAGE 509
D.B. 613-172	= DEED BOOK 613, PAGE 172
REC. 15-72	= RECORDER'S PLAT BOOK 15, PAGE 72
LND. 33-15	= LAND SURVEY VOLUME 33, PAGE 15
LOT 19-12	= LOT SURVEY VOLUME 19, PAGE 12
R.R. 8-29	= ROAD RECORD VOLUME 8, PAGE 29
R/W	= RIGHT OF WAY
CL	= CENTERLINE
AC.	= ACRES
TWP.	= TOWNSHIP
TR.	= TRACT
IL	= INLOT

LINE LEGEND	
	Blow-up Boundary
	Property Line
	Lot Split Line
	Section Line
	Centerline
	Right-of-Way Line
	Corporation Line

SURVEY INDEX	
REC. 21-12	
REC. 26-57	
REC. 26-58	

ANNEXATION
 REC. 21-12
HALIFAX ESTATES
SECTION 2
 REC. 26-57
 LOTS 10687-10699
SECTION 3
 REC. 26-58
 LOTS 10700-10712



PREPARED BY: MIAMI COUNTY ENGINEER'S MAP DEPARTMENT
 PAUL P. HUELSAMP, P.E., P.S., COUNTY ENGINEER
 DATE: JUNE 28, 2017 DS
 REVISED: July 5, 2019 DVENTURA